

Foreign Direct Investment Supports the JOBS KENTUCKY NEEDS

107,500
JOBS

QUALITY JOBS



107,500 workers in Kentucky are employed as a result of global investment.

MANUFACTURING



62,300 workers in Kentucky - about **60 percent** of all FDI jobs in the state - are in the **manufacturing sector**.

GLOBALLY CONNECTED



Among all global employers, those from the **Japan, Canada, and Germany** support the largest number of jobs in Kentucky.

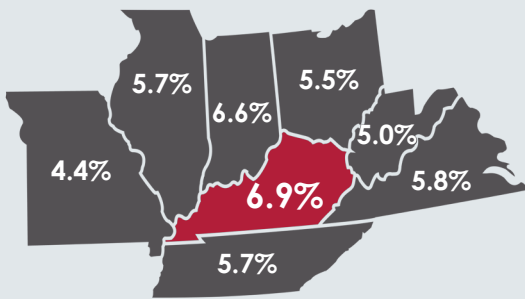
MANY EMPLOYERS



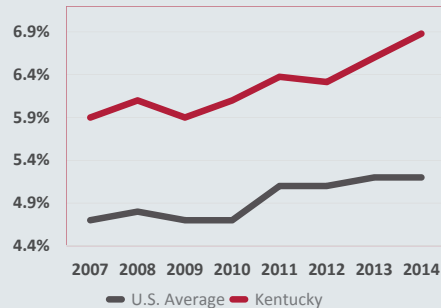
More than **630 global employers** have operations in Kentucky.

GLOBAL INVESTMENT CONTRIBUTES TO KENTUCKY'S ECONOMY

Kentucky vs. Its Neighbors
FDI Jobs as a % of Total Employment

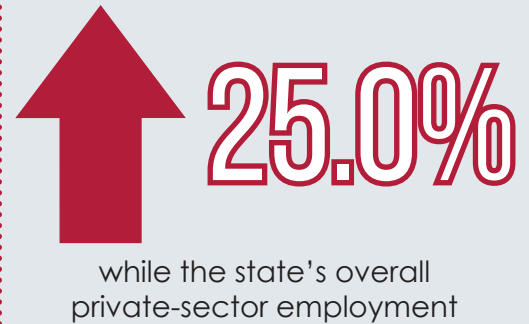


Kentucky vs. USA
FDI Jobs as a % of Total Employment



Kentucky beats the national average in the number of jobs supported by global investment.

In the past 5 years, Kentucky's FDI employment...



GLOBAL INVESTMENT SUPPORTS THE JOBS THAT AMERICA NEEDS

\$80,000

Good Paying Jobs. Across the nation, U.S. workers at global companies earn 30 percent higher compensation than the economy-wide average - making \$80,041 annually.

6.4 MILLION

Record Number of FDI Jobs. Nationally, 6.4 million U.S. workers are employed by global investment. In fact, these workers produce 26 percent of all U.S. exports.

2.4 MILLION

Strong Manufacturing Jobs. More than two million U.S. workers at global companies earn their living in the manufacturing sector - that is 37 percent of all FDI jobs.

OFII MEMBER COMPANIES IN KENTUCKY

Air Liquide USA
Akzo Nobel
Anheuser-Busch
BAE Systems
Balfour Beatty
Boehringer Ingelheim
BOSCH
BP
Bridgestone Americas Holding
Bunge Ltd
Bunzl USA
Chubb
Deutsche Telekom
Diageo
Ericsson
Evonik
Ferguson Enterprises
Flex
Food Lion
Hanson North America
Huhtamaki
Hyundai Motor America
InterContinental Hotels Group
JBS USA
John Hancock Life Insurance
LafargeHolcim
L'Oréal USA
Louis Dreyfus Commodities
Louisville Corporate Services, Inc.
Magna International

Michelin North America
Nestlé USA
Nokia
Novartis Corporation
Oldcastle, Inc.
Panasonic Corp. of North America
Pearson Inc.
Philips Electronics North America
Randstad North America
Restaurant Brands International
Rolls-Royce North America
Sanofi US
Schneider Electric USA
Schott North America
Shell
Siemens
Sumitomo Corp. of America
Syngenta Corporation
Thomson Reuters
ThyssenKrupp North America
TOTAL Holdings USA
Toyota Motor North America
Transamerica
Tyco
UBS
Unilever
WPP Group USA, Inc.
Zurich Insurance Group

